



Easy • Fast • Affordable



**TINY HOME DESIGNS
SIP PACKAGES
TRAILERS**

REALIZE YOUR DREAM OF BUILDING A TINY HOUSE

Do you dream of creating a home that is uniquely yours in a fulfilling environment that speaks to your values and interests? Would you like to reduce your footprint on planet Earth and eliminate the clutter in your life while also significantly reducing your residential expenses and related chores and challenges? The philosophy of living simply is resonating with a larger segment of the population than ever before.

The average new house in the U.S. now exceeds 2,600 square feet, and the cost and upkeep leave little time and freedom for actually living. For many people around the world like you, the solution is making the transition to tiny home living. Whether you prefer a tiny house on wheels (THoW) or a permanent structure on a foundation, Artisan Tiny House uses a step-by-step process that enables even inexperienced do-it-yourselfers to construct a sturdy, reliable, highly energy-efficient building envelope in as little time as a weekend. We provide instructions on how to assemble it and, if you choose, we can oversee your build on-site with your friends and family, or help you find a contractor.

For those interested in the portability of a tiny house on wheels, Artisan Tiny House works with trailer manufacturers around the country to ensure your THoW benefits both from maximum usable space, light weight, and superior strength. (For more on trailers, see p6-7.)

As you browse through our catalog, you will likely find a design that is close to what you have been envisioning. This catalog features our most popular THoW designs: Single Slope, Gable Roof and Curved Roof. We can work together to customize one of our templates to make it truly yours. Artisan Tiny House uses Structural Insulated Panels (SIPs) for the shell, which we have found to be the ideal building system for homes during our 30 years in green construction. (For more on SIPs, see p8-9.)

Each and every tiny house owner is as individual as the project they envision. At Artisan Tiny House, we collaborate with you to see your vision become a reality.

TABLE OF CONTENTS

ABOUT US:	2-5	GABLE ROOFS:	13-15
TRAILERS:	6-7	CURVED ROOFS:	16-18
SIPS:	8-9	TESTIMONIALS:	19
SINGLE SLOPE :	10-12	PRICING:	21- 23



ABOUT ARTISAN TINY HOUSE, LLC

The mission of Artisan Tiny House is to provide superior resources and support our clients through the initial stages of tiny home construction. Our goal is to get you past the “heavy and hard part” as quickly and easily as possible so you can focus your time and energy on the details that will make your tiny home uniquely yours.

Our services include designing and customizing building plans and supplying the trailer and SIPs (Structural Insulated Panels) package that includes fasteners and accessories necessary to fabricate your home's exterior shell. Consultation and on-site construction supervision are also available.

Artisan Tiny House was launched in 2014 as a successor to Structures NW, which was founded in 2003 to assist clients with affordable, energy-efficient building enclosures. Based in Vancouver, WA, we primarily serve the Northwestern states (Washington, Oregon, Idaho, Montana, Wyoming, Utah, Northern California and Northern Nevada), but we can work with owner-builders, contractors and suppliers around the country.

Note: “Tiny” is a relative term. We also supply SIPs and plans for accessory buildings, studios, shops and efficient dwellings. Call us at **360.576.6311**, or visit our website at **artisantinyhouse.com** for more information.

WHAT WE DO

As a maker, DIY kind of guy, I assumed everyone would want to build their own Tiny House. Of course, that isn't true, but it is the market niche we serve.

We have been providing Structural Insulated Panel (SIP) packages to owner-builders for over 20 years, so it was natural we would want to help Tiny House builders in the same way.

Since Tiny Houses on Wheels (THoWs) need a properly engineered trailer upon which to attach the house, we were drawn into designing - and having engineered - that component as well.

Today we provide a variety of stock plans for THoW shells in three widths, seven lengths and seven roof styles. Each of these plans can be semi-customized from a 3D model. By sharing our computer screen with you no matter where you are, in real time we can rotate the 3D model, moving windows and doors, and changing the sizes to make it **YOUR home**.

When you order a shell package from us, we pick up your trailer, load the SIP package and accessories onto it and then we deliver it (if you want us to show you how to assemble the package), or have it delivered to your build site. Our main market area covers Washington, Oregon and northern California, with occasional trips to Idaho, Montana and Nevada.

Beyond that geographical region, there are three options:

- 1) we can have the trailer/SIP package ready for you to pick up in Vancouver, WA;
- 2) we can provide you with the plans for both the trailer and the SIP package and you source the products in your area; or
- 3) we can work with trailer and SIP manufacturers as close to you as possible, so you could then pick them up more easily.

We are also finding qualified builders in some areas that are willing to help you assemble your package and provide some finishing services.

Our goal is to produce the safest, most energy-efficient, and affordable Tiny House shell package on the market.

Yes, you can build your own home! Let us be a part of your team.



ABOUT PATRICK

With a personal history of energy conservation and renewable energy projects dating back to the 1970s, Artisan Tiny House general manager, Patrick Sughrue, has been designing small cottages, cabins and accessory dwelling units using SIPs for over 25 years. In 2014, he added tiny houses on wheels (THoWs) to his list of available models at the request of many clients.

“Creation is one of the most amazing processes we as humans have the privilege of participating in” says Patrick. “I like to be part of the team energy that brings a client’s dream into reality. Projects turn out so much better when everyone at the table is an equal partner in the process.”

Patrick brings firsthand understanding of the needs and passions of tiny home enthusiasts to Artisan Tiny House, having built his first tiny house on the back of a 1949 Dodge flatbed truck in 1972. He lived in a 177-square-foot accessory dwelling unit in SE Portland while in college as well as in a 16'x24' cabin in Hood River, Oregon with a spring for water and an outdoor shower, where he learned to bake in a wood cook stove, churn butter and raise honeybees.

Patrick, a sustainable building advisor, has a well-earned reputation for developing excellent working relationships with home builders, vendors and contractors. He is trained in LEED (Leadership in Energy and Environmental Design), a widely used green building rating system, and in Passive House design, in addition to Earth Advantage and Net Zero homes. His articles on simplicity and green building, building with SIPs, and passive and active solar design have been published in Green Living and Home Power. Patrick has an extensive and holistic, 30-year construction base that includes concrete, framing, wiring, plumbing and HVAC, which adds to his thoughtful design considerations.



CUSTOM TRAILERS AND PLANS

The trailer is the foundation of your THoW, so you want to do it right. All of Artisan Tiny House's trailer manufacturers carefully craft your new trailer to a design that makes it light weight, strong and well suited for building with Structural Insulated Panels (SIPs). Meeting all Department of Transportation guidelines, our trailers will accommodate either floor system, whether you choose to build it into or on top of the frame.

Artisan Tiny House has manufacturers in California, Colorado, Oklahoma, Oregon, Texas and Washington. DIY plans are also available if you want to fabricate it yourself or choose your own manufacturer.

The key determinants in selecting a trailer are the weight, width and length of your tiny house. Trailers are designed to carry a Gross Vehicle Weight (GVW) as well as a maximum weight on the tongue so they will pull properly.

Our trailers are manufactured in lengths of 16', 20', 24', 28' and a 5th-wheel version that is 32' (24' down and 8' up on the neck) or 36' (with 8' up and 28' down).

Our trailers are available either 8'-0", 8'-4" or 8'-9" wide. When calculating the width of your home be sure to include items that extend outward: trim, roof, vents, outlets, etc. Trailers that are used for tiny houses are almost always 8'-6" to the outside of the fenders. However, the inner platform that you build your home on can be anywhere from 7' (the width of the main frame) up to 8'-9" that will finish at about 9'-0", giving you a full 96" inside width. In the western states a wide load permit for a 9-foot wide trailer is about \$10.00.

TRAILER FEATURES

STEEL TUBE MAIN FRAME

After careful evaluation, we chose fully welded steel tube for the main frame and the outriggers. Structural steel C channel for the cross members make up the balance of the system.

CHANNEL IN-FRAME FLOOR SYSTEM

Our design makes it simple and quick to build a fully insulated floor on the frame.

SECURE FLOOR ATTACHMENT

Our outrigger system saves weight and allows a house floor-to-trailer connection every 24".

NO STEEL PAN TO CONDENSE MOISTURE IN THE FLOOR

Our trailers are designed to use ½" pressure-treated plywood as the protective shield. This keeps moisture from the condensing steel away from your floor.

HEAVY-DUTY HITCH

Our trailers come standard with an adjustable heavy-duty 2-5/16" hitch rated for 20,000 lbs. and two heavy-duty chains with a battery-powered, breakaway safety kit, and a 5,000 lb. hitch lifting jack.

HEAVY-DUTY WHEELS

Our trailers come standard with heavy-duty steel wheels and 6-ply radial tires rated for the load.

HEAVY-DUTY AXLES

Our trailers come standard with heavy-duty 5,000 lb. to 7,000 lb. axles, depending on the size of your trailer, with electric brakes on each axle. The matching springs are rated for the GVW load of each trailer.

HEAVY-DUTY LEVELING JACKS

Our trailers come standard with heavy-duty 2,000 lb. capacity leveling jacks at each corner, making it simple and quick to properly level your THoW.

LED LIGHTING

We exceed all Department of Transportation requirements by providing super-bright LED lights to make you highly visible when you are towing.





STRUCTURAL INSULATED PANELS (SIPS)

Structural Insulated Panels (SIPs) are a high-performance, green building system that is extremely strong, energy-efficient and cost-effective, and require no additional frame or skeleton for support. They consist of an insulating expanded polystyrene (EPS) foam core sandwiched between two facings of oriented strand board (OSB), using a structural adhesive. SIPs can be fabricated to fit nearly any building design. Artisan Tiny House's SIPs arrive with all window and door openings cut out and are routed for wiring and lumber.

SIPs dramatically reduce air transfer through the floor, walls and roof by minimizing joints, and provide solid, continuous insulation across each panel's height, width and depth. Artisan Tiny House's standard package for a tiny house on wheels includes floor, walls and roof SIPs that are 4-1/2" (R-16).

Thicker SIPs with higher R-values or for higher snow loads are available as an option. We can now also provide 4-1/2" (R-20) or 6-1/2" (R-30) SIPs - see below.

ATH packages include accessory materials such as SIP screws, hardware for floor connection, tape, foam, and mastic.

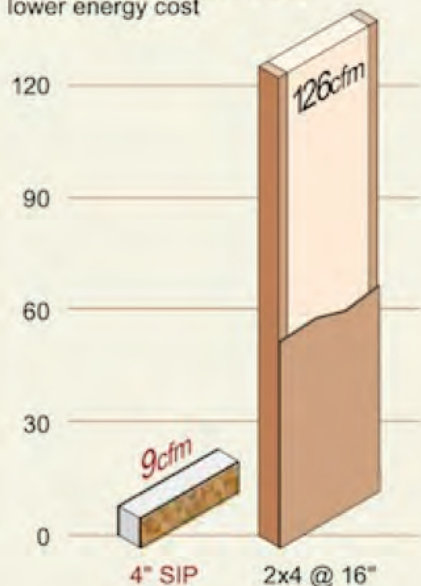
UPGRADE OPTIONS:

Graphite Polystyrene (GPS) is a new type of foam that increases the insulation value of a 4-1/2" SIP to R-20 and 6-1/2" to R=30. It also acts as a less toxic fire retarder.

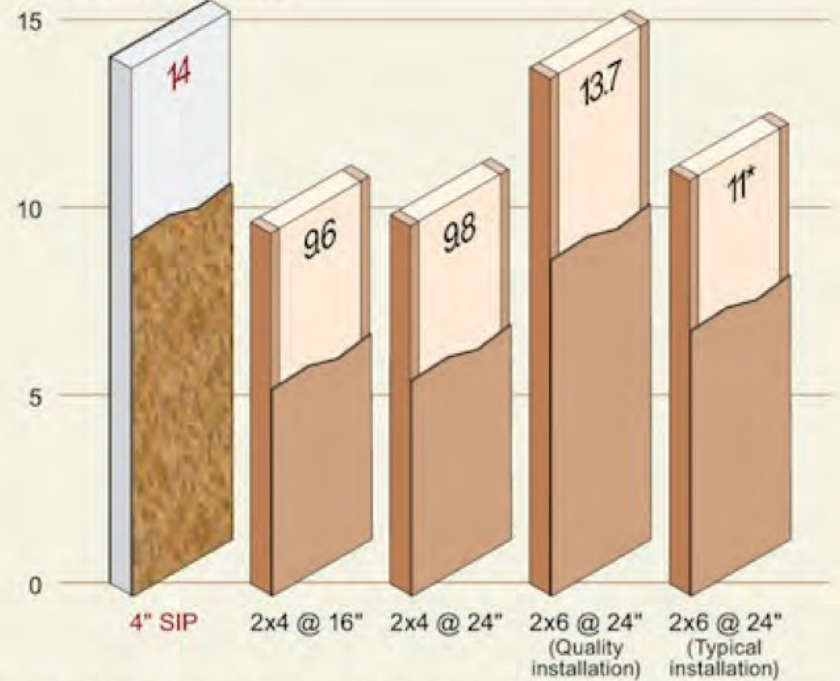
Z-Board is a new type of Oriented Strand Board (OSB) that has the minerals zinc and borate mixed in the slurry when the OSB is manufactured to increase the mold and insect resistance.

WHOLE-ROOM AIR INFILTRATION, ORNL TESTING

Lower cfm = higher comfort + lower energy cost



WHOLE-WALL R-VALUE



* Tests show that in the "worst case commonly found of procedures for installing batt insulation" the performance drops to R-11.
Figure courtesy of APA.

BUILDING WITH SIPS SAVES YOU TIME AND MONEY:

- 55% reduction in labor (Source: RS Means/BASF study)
- 50%-60% energy savings in test homes
- Less air infiltration means less draft and more comfort
- Minimal thermal bridging for higher energy efficiency
- More consistent product (straighter, no warps, knots, shrinkage)
- Not as susceptible to "settling" as stick framing
- Allows you to build it tight, but ventilate it correctly
- No need to find studs when attaching items to walls
- Less ambient noise

And OSB is produced from plantation trees, which allows for faster tree replenishment.



SINGLE SLOPE ROOF

SIDE TO SIDE

The Single Slope is our most popular model. With its lean, modern look, the Single Slope is easy to finish out quickly and easily at minimal cost both on the inside and the outside. These can be designed with the slope in Connex, Side 2 Side, or Front 2 Back.



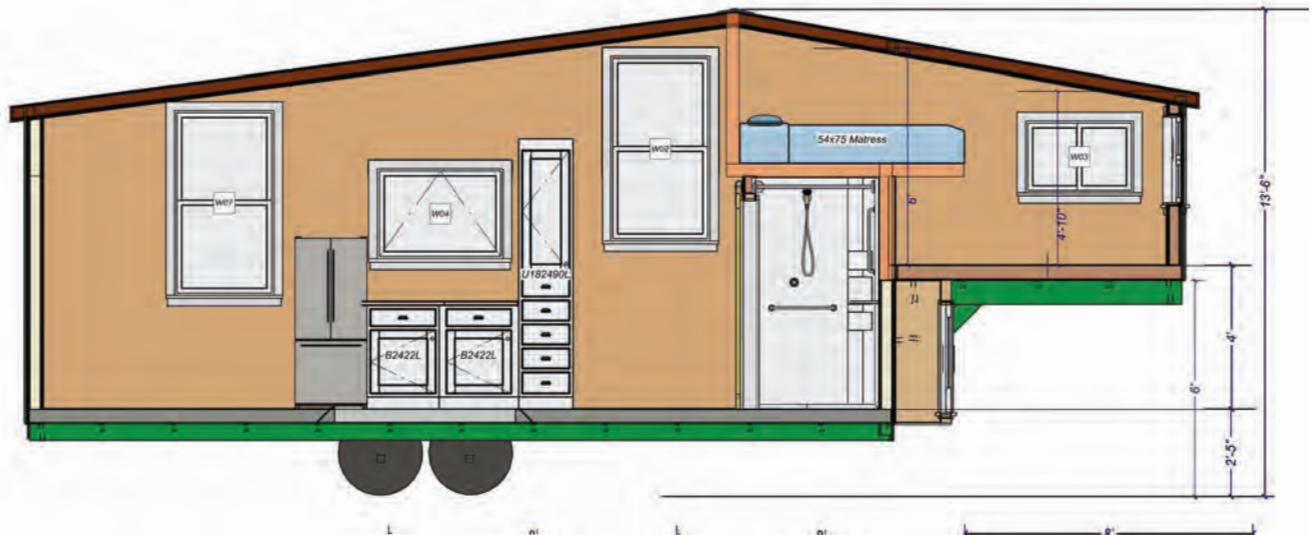
CONNEX



SIDE 2 SIDE



FRONT 2 BACK



SHELL DESIGN

Whether used for full-time living, a country getaway, job shack, tool shed, storage or food cart, the Single Slope offers simplicity in form and function.

Our Standard Package comes with:

- 4-1/2" SIPs (R-16) for the floor, walls and roof.
- Custom window and door placement.

CUSTOMER EXAMPLES





GABLE ROOF

CENTER DORMERS

Our Gable Roof design combines a modern construction approach with the look of a more traditional “gingerbread” cabin or Victorian style home. This is the traditional-style tiny house -- the little cabin in the woods. With its rustic look, this model lends itself to reclaimed and repurposed materials.

Gable roof models are also available with Rear Dormers or Center Dormers. These models take a little more work to build because of the ridge down the center. They also require more time and skill to finish around the angles created by the dormer walls. With a one-story version, you can have a smaller loft for storage or a child’s sleeping area. Shed dormers either in the center or at the end of the roof add considerable room in the loft.



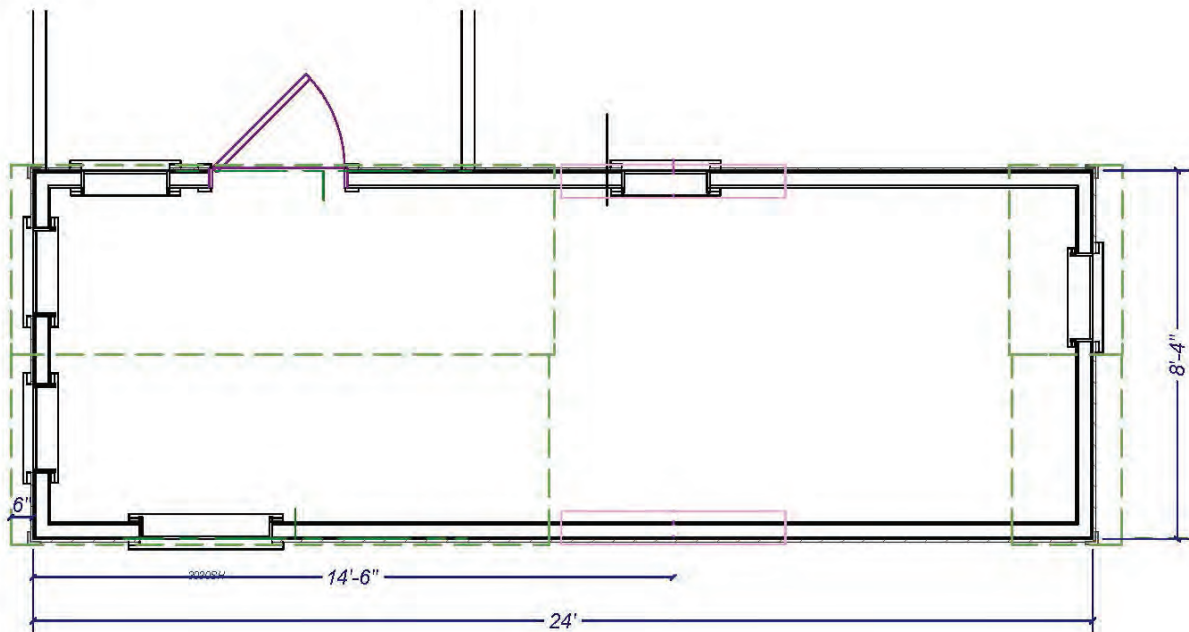
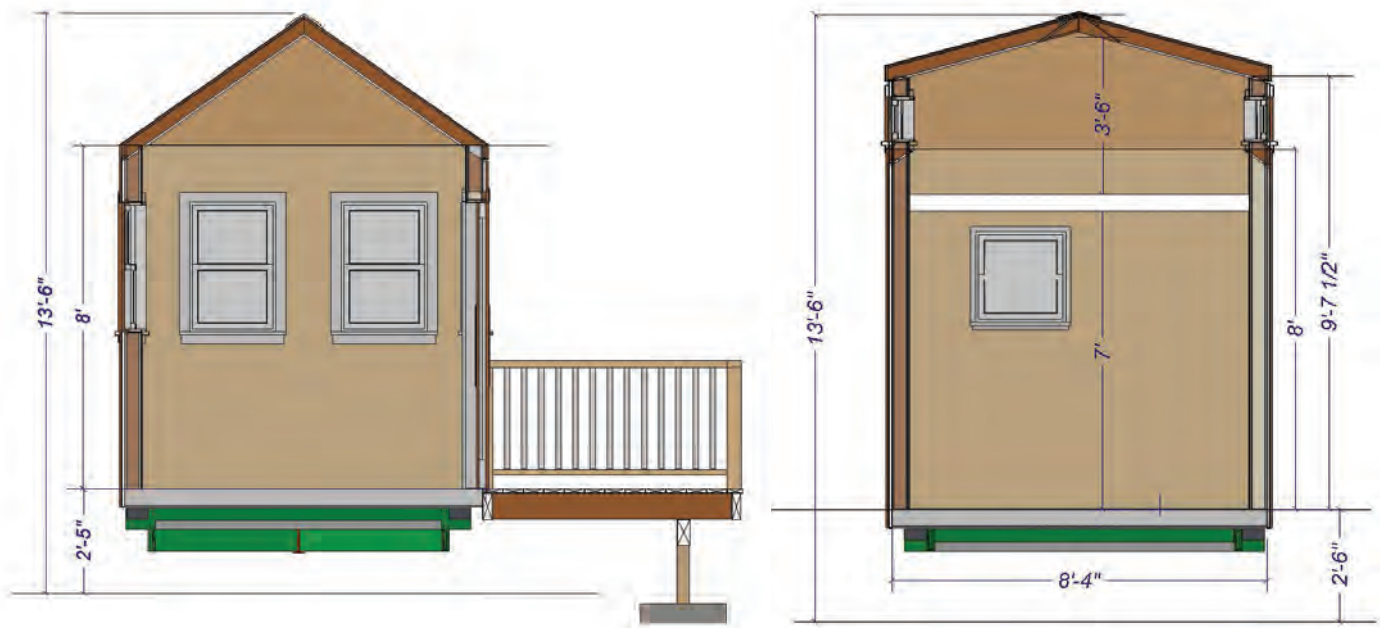
OFFSET GABLE



REAR DORMERS



CENTER DORMERS



SHELL DESIGN

Gable-styled homes are perfect for those who desire adding a bit of personalized charm, whether used for full-time living, a guest house or B&B rental, or a country getaway.

Our Standard Package comes with:

- 4-1/2" SIPs (R-16) for the floor, walls and roof.
- Custom window and door placement.

CUSTOMER EXAMPLES





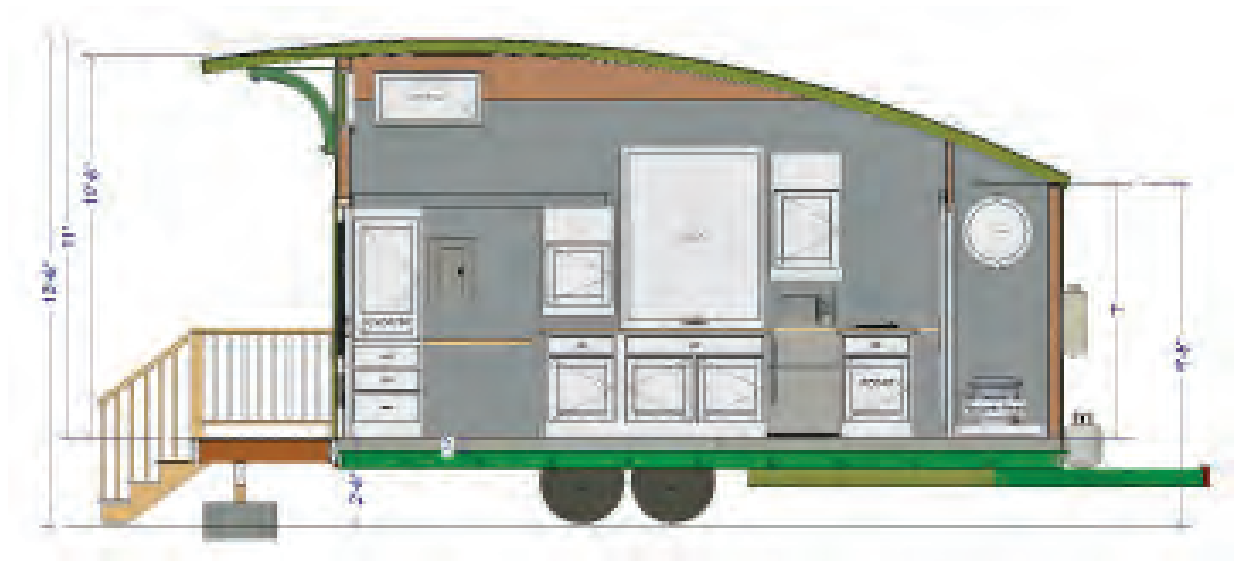
CURVED ROOF

SIDE TO SIDE

Our curved “Vardo” roof is designed for those who want a modern construction approach with historic “gypsy” caravan styling. Vardos were traditionally horse-drawn wagons used by British Romani people and were highly decorated, intricately carved and brightly painted. This model takes a little more work to build because of the curves, as well as more time and skill to finish around the roof edges. Our Front 2 Back curved roof Vardo can be 1-story or 1-1/2 stories with a loft.



FRONT 2 BACK



SHELL DESIGN

Whether used for full-time living, a road trip to your favorite festivals or as an artist's studio, curved roof style homes are ideal for expressing your creativity.

Our Standard Package comes with:

- 4-1/2" SIPs (R-16) for the floor, walls and roof.
- Custom window and door placement.

CUSTOMER EXAMPLES





CUSTOMER STORIES



“Deciding to work with Patrick was something I didn’t have to think twice about. Watching him create building plans for my custom design in 3D was exhilarating and has turned my dream into reality. Patrick offers practical suggestions while staying true to the original ideas and he makes the process, which can feel overwhelming, much more obtainable with his kits and knowledge of quality products and companies to utilize along the way. My dream of living in a simple, efficient dwelling matches perfectly with what his services provide and I have peace of mind knowing that he believes in the same type of living.”

Rebecca Flynn
Teal Rose



“It was so great working with Patrick to pull together the SIPs kit for the tiny home I designed for myself. Patrick was there to answer questions and even came for the wall raising day to get the walls up! We’ve continued to work together on several other SIP tiny houses since then.”

Lina Menard
Niche Consulting



“Without the help of Patrick, the Terraform Tiny House would have probably remained an imagined design and pile of sketches on my desk indefinitely. Patrick made it easy to transform a drawing into a structurally sound dwelling. He worked directly with trailer and SIPs manufacturers, sourced local manufacturers even though he was 2,000 miles away, and provided invaluable advice for my custom build. Patrick was with the project every step of the way and worked efficiently to meet my deadlines. Not only was Patrick beyond worth the money spent, he was a joy to work with and I benefited greatly from having him as a colleague.”

Richard Ward
Terraform Tiny Homes



15206 NW 29TH CT.
VANCOUVER, WA 98685

360.576.6311

OFFICE@ARTISANTH.COM

WWW.ARTISANTINYHOUSE.COM

PRICING

MODEL			Square Footage (excluding any loft)	SIP Package Page 2	Custom Trailer Page 3	TOTAL Package Price*
Square Footage is based on 8'4" Exterior Dimensions						
1	8x16 <u>Connex</u>	(1-Story) 9' walls	133	\$11,000	\$5,000	\$16,000
2	8x20 <u>Connex</u>	(1-Story) 9' walls	166	\$12,000	\$5,500	\$17,500
3	8x24 <u>Connex</u>	(1-Story) 9' walls	200	\$13,000	\$6,000	\$19,000
4	8x20 <u>Side-2-Side</u>		166	\$11,500	\$5,500	\$17,000
5	8x24 <u>Side-2-Side</u>		200	\$12,000	\$6,000	\$18,000
6	8x24 <u>Side-2-Side</u>	(1-Story) 8' to 9' walls	200	\$11,500	\$6,000	\$17,500
7	8x28 <u>Side-2-Side</u>		233	\$13,000	\$7,500	\$20,500
8	8x32 <u>Side-2-Side (5th Wheel)</u>		266	\$15,500	\$9,000	\$24,500
9	8x36 <u>Side-2-Side (5th Wheel)</u>		300	\$16,500	\$9,500	\$26,000
10	8x20 <u>Front-2-Back or Offset Gable</u>		166	\$11,500	\$5,500	\$17,000
11	8x24 <u>Front-2-Back or Offset Gable</u>		200	\$12,500	\$6,000	\$18,500
12	8x24 <u>Front-2-Back</u>	(1-Story) 10' high	200	\$12,000	\$6,000	\$18,000
13	8x28 <u>Front-2-Back or Offset Gable</u>		233	\$13,500	\$7,500	\$21,000
14	8x32 <u>Front-2-Back or Offset (5th/Goose)</u>		266	\$15,000	\$9,000	\$24,000
15	8x36 <u>Front-2-Back or Offset (5th/Goose)</u>		300	\$16,000	\$9,500	\$25,500
17	8x20 <u>Gable</u>		166	\$13,000	\$5,500	\$18,500
18	8x24 <u>Gable</u>		200	\$14,000	\$6,000	\$20,000
19	8x24 <u>Gable</u>	(1-Story)	200	\$13,000	\$6,000	\$19,000
20	8x28 <u>Gable</u>		233	\$15,000	\$7,500	\$22,500
21	8x32 <u>Gable (5th Wheel)</u>		266	\$16,500	\$9,000	\$25,500



PRICING

MODEL		Square Footage (excluding any loft)	SIP Package	Custom Trailer	TOTAL Package Price*
Square Footage is based on 8'4" Exterior Dimensions					
22	8x20 <u>Gable with Dormers</u>	166	\$14,000	\$5,500	\$19,500
23	8x24 <u>Gable with Dormers</u>	200	\$15,000	\$6,000	\$21,000
24	8x28 <u>Gable with Dormers</u>	233	\$16,000	\$7,500	\$23,500
25	8x32 <u>Gable with Dormers (5th Wheel)</u>	266	\$17,500	\$9,000	\$26,500
26	8x16 <u>Curved Front-2-Back</u>	133	\$12,000	\$5,000	\$17,000
27	8x20 <u>Curved Front-2-Back</u>	166	\$13,000	\$5,500	\$18,500
28	8x24 <u>Curved Front-2-Back</u>	200	\$14,000	\$6,000	\$20,000

SIP PACKAGE includes: 4-1/2" EPS-panels (R-16) with window and door cut-outs, routed for wire chases with corner and spline lumber installed. (Bevel cut lumber is supplied when needed.)
Accessories included: Floor bolts, nuts, bearing plates, SIP screws, SIP mastic, spray foam.

SIP PACKAGE does not include: additional lumber and fasteners, including floor and top plates, window and door bucks plus PT (pressure-treated) plywood. Your plans will include a take-off of additional materials and you are responsible for supplying these items.

Optional UPGRADES:

4-1/2" GPS-panels (R-20) for the Floor, Walls and Roof,
add \$2.00 per square foot of floor area (see table above).

6-1/2" GPS-panels (R-30) for the Roof only,
add \$2.00 per square foot of floor area (see table above).

***Excludes Sales Tax (if applicable) and Delivery Charges. Prices are subject to change.**

Custom Trailer Specifications

Floor Size	GVW	ATH Model Number				# of Axles
		8'-0"	8'-4"	8'-9"	GVW	
8' x 16'	10,000 GVW	16096-2	16100-2	16105-2	7,000	2
8' x 20'	12,000 GVW	20096-2	20100-2	20105-2	10,000	2
8' x 24'	14,000 GVW	24096-2	24100-2	24105-2	14,000	2
8' x 28'	21,000 GVW	28096-3	28100-3	28105-3	21,000	3
8' x 32' *	21,000 GVW	32096-3	32100-3	32105-3	21,000	3
8' x 36' *	21,000 GVW	36096-3	36100-3	36105-3	21,000	3
*5th Wheel or Goose Neck						

Trailer Specifications:

Axles	Dexter (Made in USA) 4" drop 5000 lb. to 7000 lb. depending on trailer length
Brakes	Electric Brakes on all Axles
Wheels	Steel Load Rated for the Gross Vehicle Weight (GVW)
Tires	6 Ply Bias Ply - Load Rated for the Gross Vehicle Weight (GVW)
Jacks	1) 5K Hitch Jack on Pull Behind Trailers plus four (4) 5,000 lb. scissor jacks 2) 10K independent landing gear on 5th wheel plus two (2) 6,000 lb. scissor jacks
Frame	2x6 or 2x8 .188 Steel Tube
Cross members	3 x 3.5 Structural Steel C Channel
Outriggers	2x4 .120 Steel Tube
Floor Connection	1/2" Bolt - @24" OC
Lights	LED Lights to Department Of Transportation (DOT) Standards
Wiring	7 Spade RV style connector
Coupler	2-5/16" HD Adjustable height on Pull Behind Trailers Adjustable 5th Wheel Pin or Goose Neck Coupler Available
Safety	Break Away Control to stop the trailer if it comes loose Two (2) Load Rated Steel Hooks and Chains Four (4) or six (6) HD Steel D Rings for Tie Downs depending on length

Provides Insulation Across the Entire Floor. / No Metal Pan to Condense Water

Exceeds Park Model code: ANSI 119.5

Specifications are subject to change.